

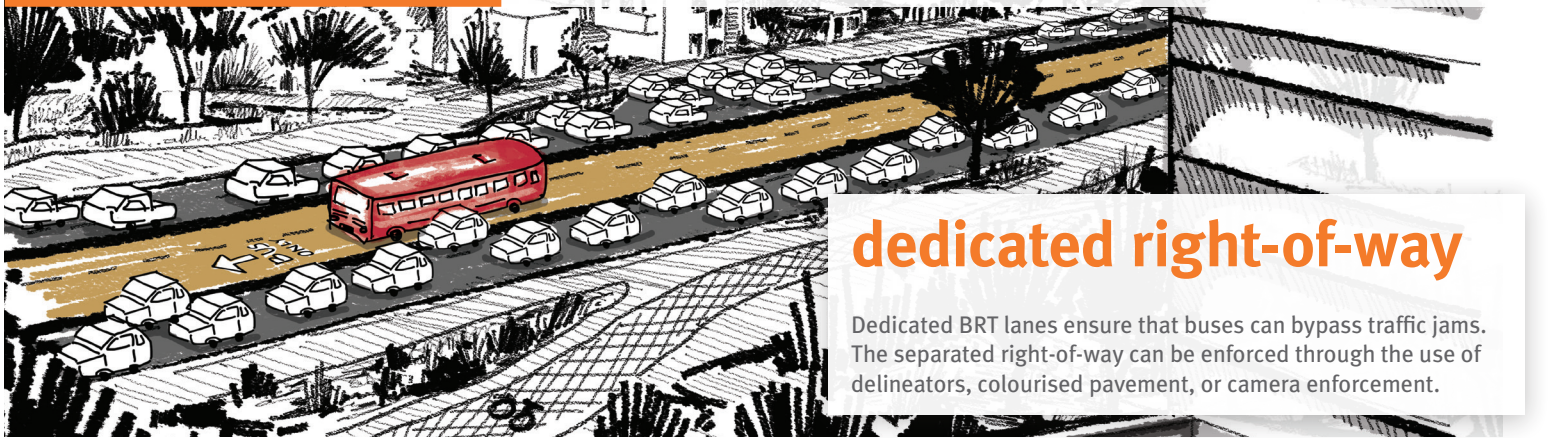
The BRT Standard

The BRT Standard is part of a global effort by leaders in bus transport design to establish a common definition of bus rapid transit (BRT) and ensure that BRT systems deliver world-class passenger experiences, economic benefits, and positive environmental impacts.



BRT BASICS

The BRT Basics are features that are essential to any BRT system. These elements ensure that BRT systems have high operating speeds and provide a good customer experience.

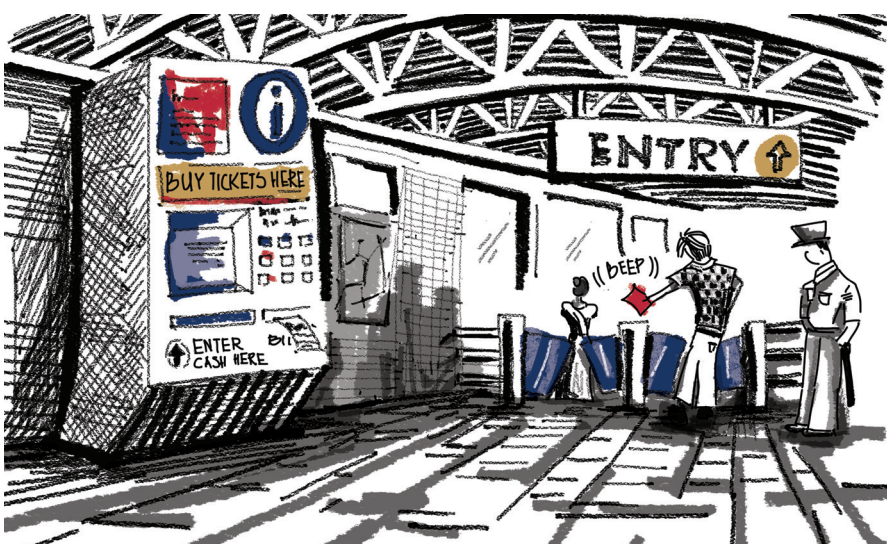
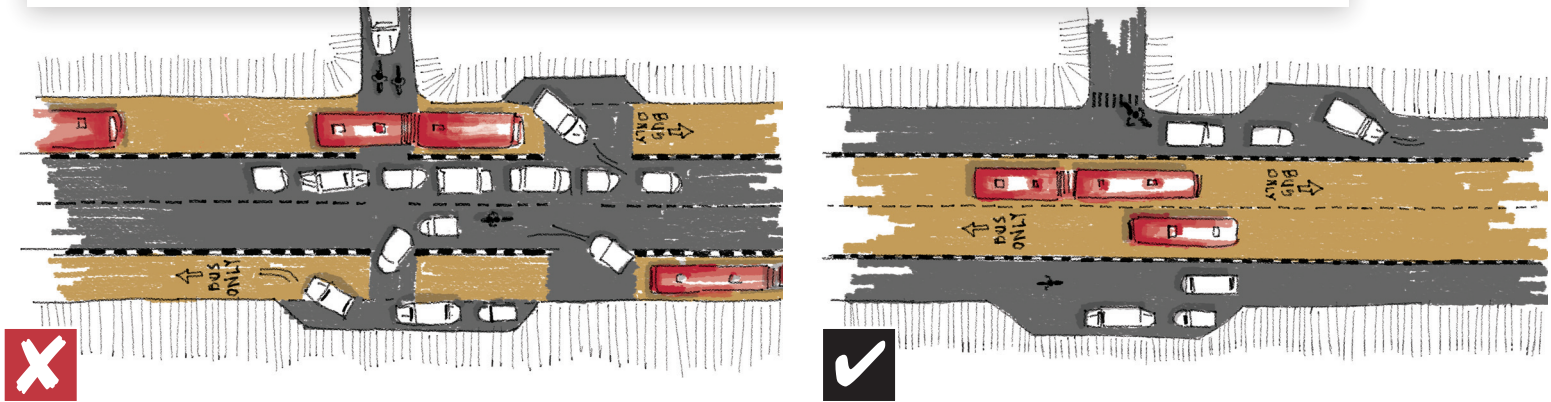


dedicated right-of-way

Dedicated BRT lanes ensure that buses can bypass traffic jams. The separated right-of-way can be enforced through the use of delineators, coloured pavement, or camera enforcement.

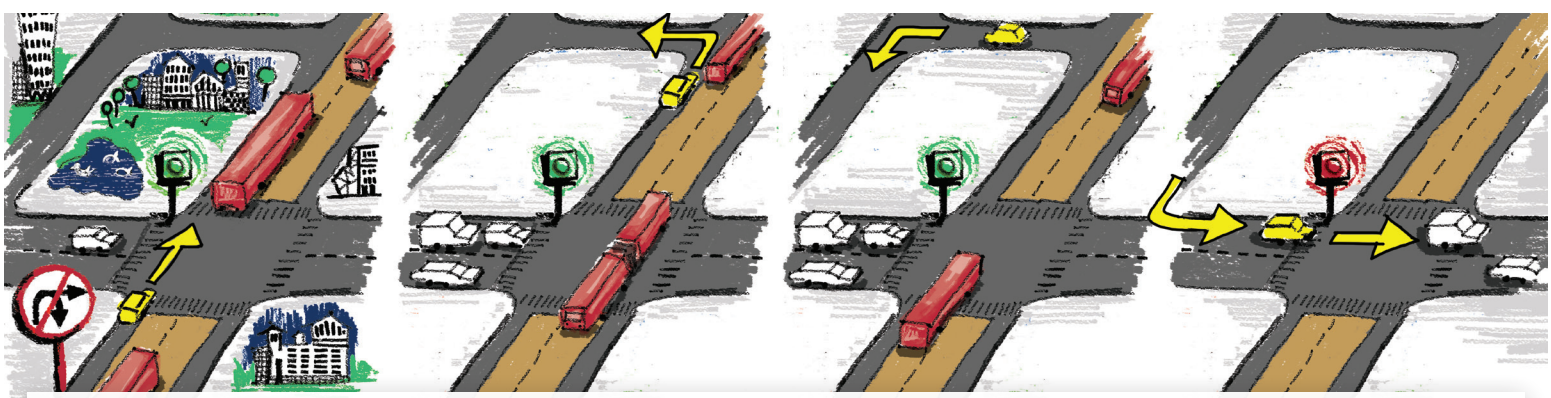
busway alignment

Median-aligned busways minimise the risk of delays caused by turning movements and parked vehicles.



off-board fare collection

Off-board fare collection reduces boarding time and prevents revenue leakage. Barrier-controlled systems employ turnstiles or flap gates that allow access when users tap their smart cards. Proof-of-payment systems can be employed on routes that extend beyond trunk BRT corridors.



intersection treatments

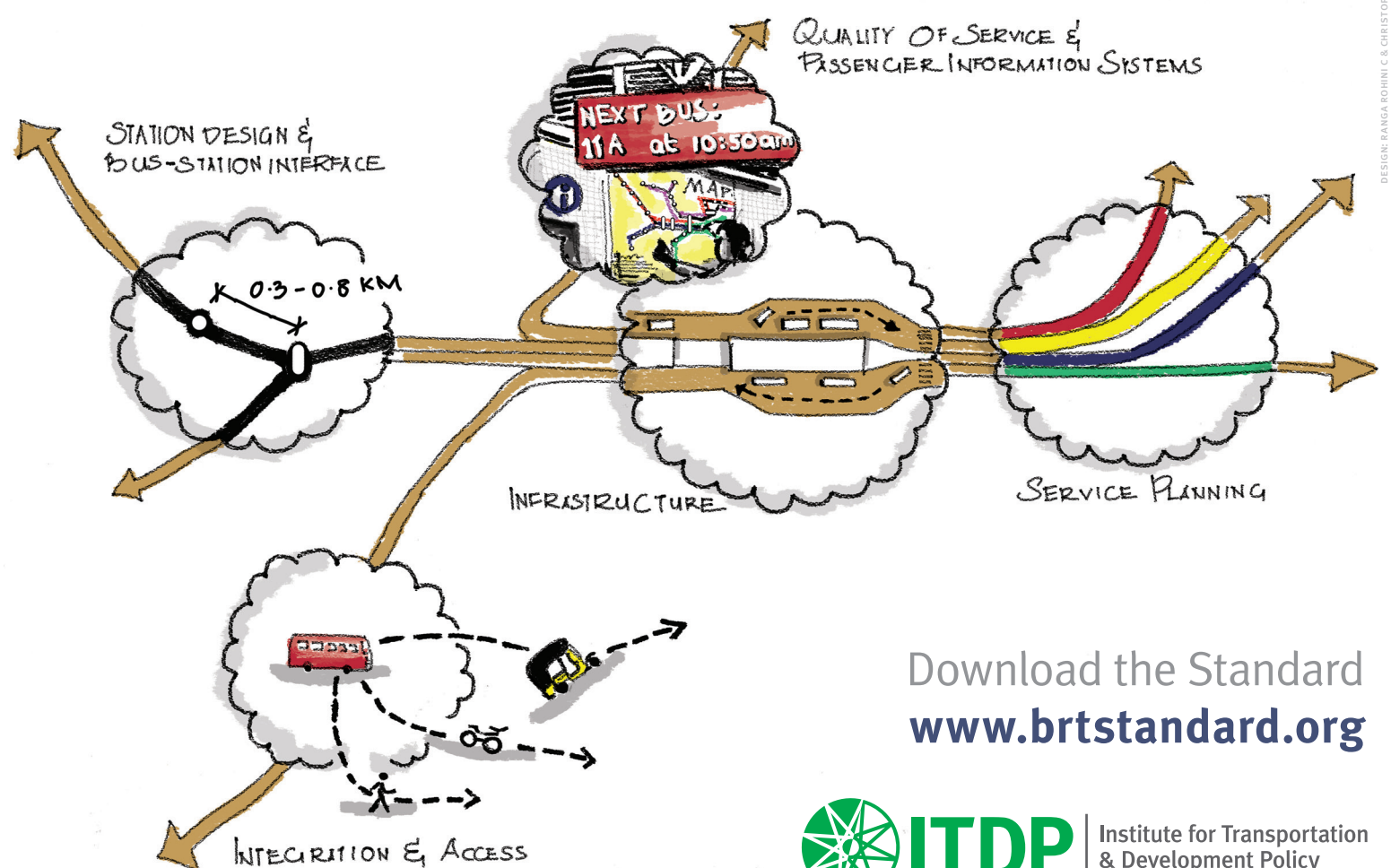
Forbidding turns across the bus lanes and simplifying signal cycles reduce delays. Traffic-signal priority activated by an incoming BRT vehicle can increase speeds in low-frequency systems.

platform-level boarding

The bus floor and station platform should be at the same height to minimise boarding and alighting times. Reducing vehicle-to-platform gaps ensures easy access for the disabled and the elderly.



Beyond the Basics, high quality BRT systems demonstrate excellence in the following areas:



Download the Standard
www.brtstandard.org